

*Community Response to the NRC Report
“Observing Weather and Climate
FROM THE GROUND UP
A Nationwide Network of Networks”*

George Frederick

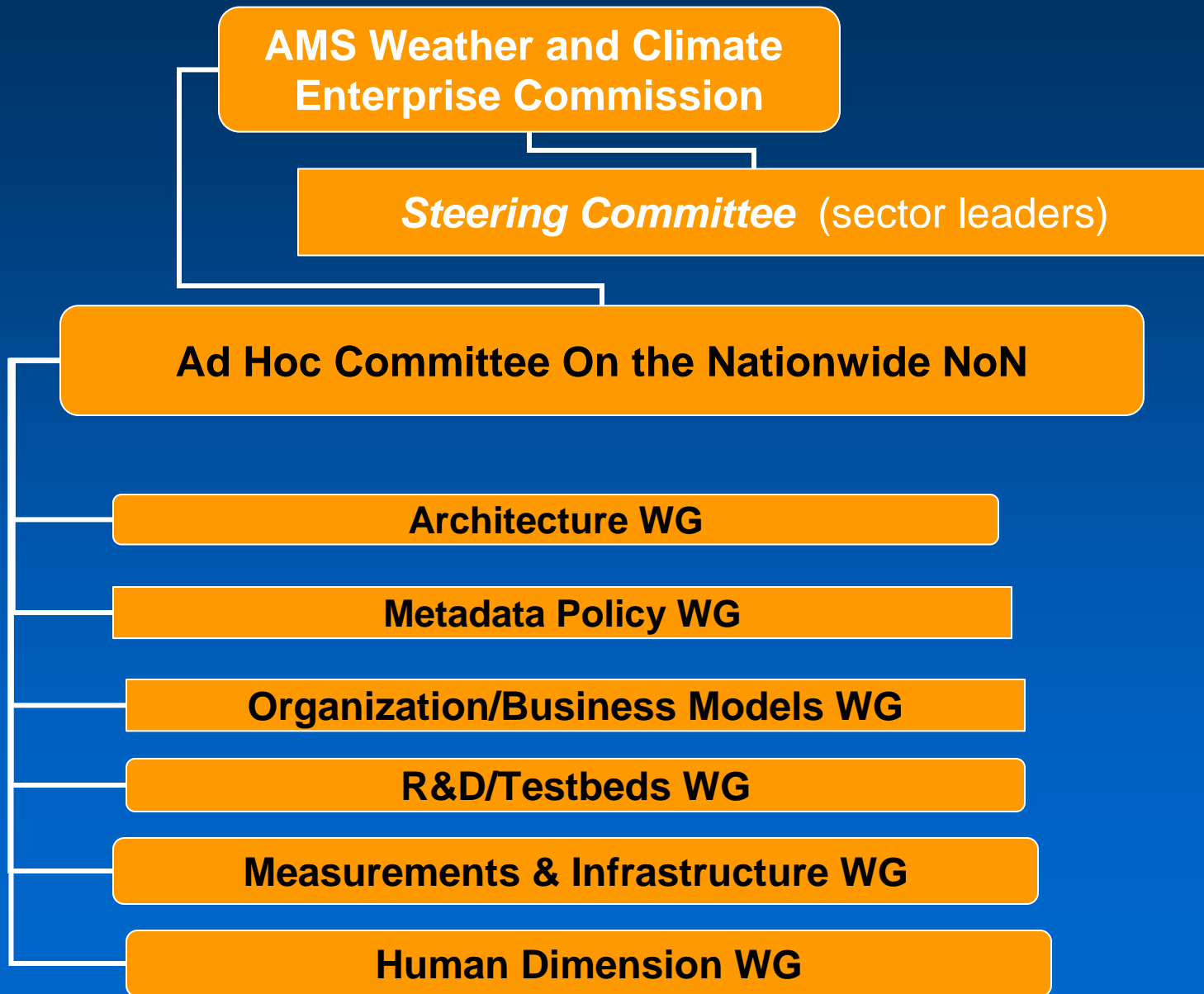
Falcon Consultants LLC

**Chair, AMS Ad Hoc Committee on the
Nationwide Network of Networks**

**Update
December 2009**



Organizational Structure of the Nationwide Network of Networks Community Activity



Terms of Reference

- Ad Hoc committee with free and open discussion of the issues encouraged
- Committee resides under the Commissioner of the AMS Weather and Climate Enterprise Commission.
- Strategy development includes addressing potential business models, organizational structure and operating modes.
- A plan for a summit of stakeholders will be developed
- Other committees and/or working groups may be established to address specific aspects of the issue and to plan for implementation of the strategy developed.
- Life of the ad hoc committee indefinite but should be reviewed at least annually

Members of the AMS Ad Hoc Committee on the Nationwide Network of Networks

- **Government**

- NOAA/NWS (Don Berchhoff)
- NOAA/OAR (Steve Fine)
- NOAA/NESDIS (Scott Hausman)
- FHWA (Paul Pisano)
- OFCM (Sam Williamson)
- EPA (Rich Scheffe)
- AASC (Ken Crawford)

- **Private Sector**

- Vaisala (Walt Dabberdt)
- AWS (Bob Marshall)
- Accuweather (Joel Myers)
- DTN (Jim Block)

- **Academia**

- OU (Fred Carr)
- Utah (John Horel)
- NCAR (Rit Carbone)
- NC State (Len Pietrafesa)

- **AMS**

- WCEC (George Frederick)--Chair
- HQ (Gary Rasmussen)

- **Others (ex Officio)**

- Pam Emch (BEED Chair)
- Veronica Johnson (BEC Chair)
- Tim Spangler (BEP Chair)
- Joe Friday (WCEC Commissioner)
- Chairs of the Working Groups

Architecture WG

- Working Group
 - Chair: John Horel
 - Members
 - Andres Orrego
 - Bill Callahan
 - Christopher A. Fiebrich
 - David Helms
 - Garry L. Schaefer
 - John Horel
 - Jonathan Porter
 - Kenneth G. (Ken) Hubbard
 - Mike Grogan
 - Pat Guinan
 - Paul Heppner
 - Richard J. Kramer
 - Robert Pasken
 - Tom Stoffel
- Tasks
 - Overall NoN Architecture Options
 - Data Collection/Communication
 - Network Catalog
 - Database and archive issues
 - Real-time access procedures
 - Online data availability
 - Network Security
 - Quality Control
 - Proprietary Data handling

Metadata Policy WG

- Working Group
 - Chair: Dr. Renee A. McPherson
 - Members
 - Anthony R. Lupo
 - Bob Scott
 - Brenda Boyce,
 - James (Jay) Titlow
 - Jerry Brotzge
 - Jim O'Sullivan
 - Joshua Campbell
 - Loren White
 - Mohan Ramamurthy
 - Renee A. McPherson
 - Richard Berler, CBM
 - Sytske Kimball
- Tasks
 - Metadata Template
 - Standards Recommended for
 - Surface Data Networks
 - Subsurface Data Networks
 - Upper Air Data Networks
 - Ocean, Marine, Coastal Data Networks

Organization/Business Models WG

- Working Group
 - Chair: Paul D. Campbell
 - Members
 - Bob Plante
 - Brian Bell
 - Carlton L Bjerkaas
 - Chris Hill
 - Curtis Marshall
 - Jim Giraytys
 - Joe Friday
 - John J Doherty
 - Kevin Schrab
 - Maria A. Pirone
 - Paul D. Campbell
 - Richard Pyle
 - Steve Woll
- Tasks
 - NoN Management Structure
 - Concept of Operations
 - Charter
 - Business Model Options
 - Develop Business Model options
 - Pilot Tests of selected Business Models
 - Establish Proprietary Data Procedure options

R&D/Testbeds WG

- Working Group
 - Chair: James R. Stalker
 - Members
 - Alan Hinckley
 - Allan C. Eustis
 - David J. Stensrud
 - David M. Schultz
 - Dr. Jason Allard
 - James R. Stalker
 - Marc Schwartz
 - Wes Perkins
- Tasks
 - NoN R&D Needs
 - Testbed design/architecture

Measurements and Infrastructure WG

- Working Group
 - Chair: John Lasley
 - Members
 - Allen B. White
 - Brent L. Shaw
 - Jason Karvelot
 - John Lasley
 - Justin Sharp
 - Kevin Rhodes
 - Mike Palecki
 - Paul Ruscher
 - Randall Bass
 - Robert Doornbos
 - Robert K. Hammar
 - Sergio Marsh
 - V. Chandrasekar
 - William Beasley
- Tasks
 - Identify current capability
 - Identify requirements
 - Identify Gaps between current capability and requirements
 - Lower troposphere (boundary layer)
 - Atmospheric pollutants
 - Soil Moisture and Subsurface temperatures
 - Scanning remote sensors
 - Metsats
 - Road weather
 - Ocean, Marine, Coastal
 - Recommend path forward

Human Dimension WG

- Working Group
 - Chair: Brenda Philips
 - Members
 - Brenda Philips
 - Jim Angel
 - Nolan Doesken
 - Tim McClung
- Tasks
 - Design methods for assessment and quantification of the economic value of NoN data to users
 - Develop methods to communicate this information to Congress, Government agencies and the public
 - Identify Training and Outreach opportunities for current and new NoN users
 - Identify ways to broaden uses of data beyond traditional weather and climate users

Ongoing & Future Activities

- Current/Recent—
 - First Committee Meeting—PPP Forum, April 2009
 - Second Committee Meeting—Telecon, June 2009
 - Summer Community Meeting—August 2009
 - Working Groups Formed—Fall 2009
- Future
 - Working Group Meetings—Fall-Winter 2009
 - Town Hall Meeting—Annual Meeting Atlanta, January 2010
 - Working Group Meetings—Spring 2010
 - PPP Forum—April 2010
 - Summer Community Meeting—Summer 2010
 - Stakeholders “Summit”--?????

Questions

Feel free to contact me at any time at:

George Frederick

george.frederick@vaisala.com

falconsultants@aol.com

Phone 512-864-1784

Mobile 512-656-9411

