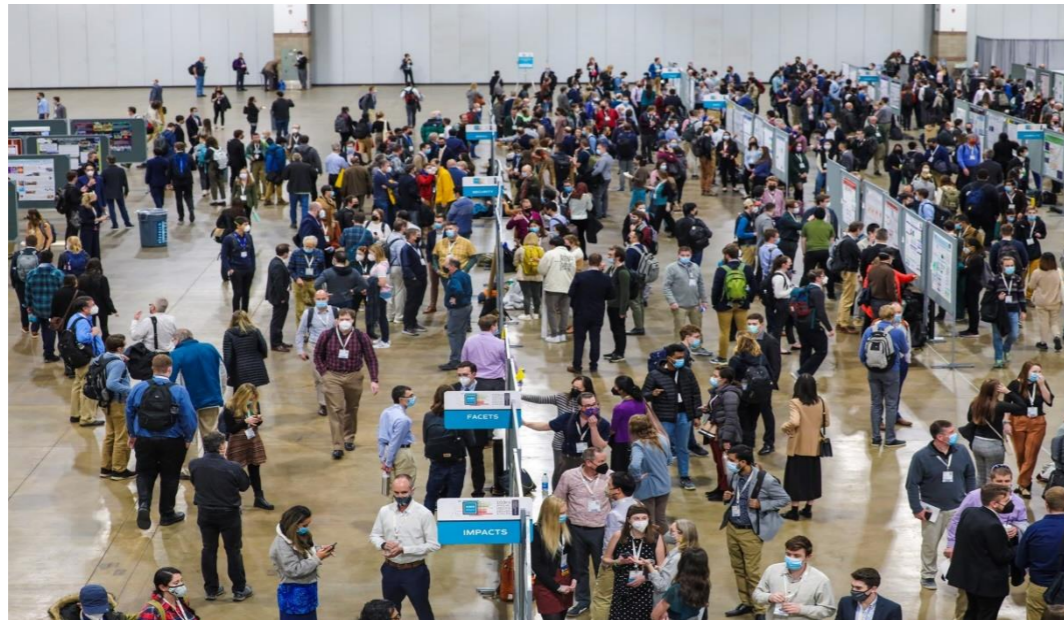




AMS 2023 103rd Annual Meeting

SUSTAINABILITY EVENT REPORT

CONFERENCE VITALS



Date: 1/8/23-1/12/23

Location: Denver, CO

Venue: Colorado Convention Center, Embassy Suites
Denver Downtown, Hyatt Regency Denver

Attendees: 5,875 in-person & 1,010 virtual

Sponsors: 47 sponsors & 73 exhibitors

Event Features: Award Receptions, Keynotes, Panels,
Poster Sessions, Exhibitor Hall, Town Hall Meetings,
Committee Meetings

ABOUT AMS ANNUAL MEETING

The AMS Annual Meeting is the world's largest yearly gathering for the weather, water, and climate community. It brings together great minds from a diverse set of scientific disciplines – helping attendees make career-long professional contact and life-long friends while learning from the very top people in the atmospheric sciences.

SUSTAINABILITY ACHIEVEMENTS

AMS 103RD ANNUAL MEETING

MEETING PLANNING

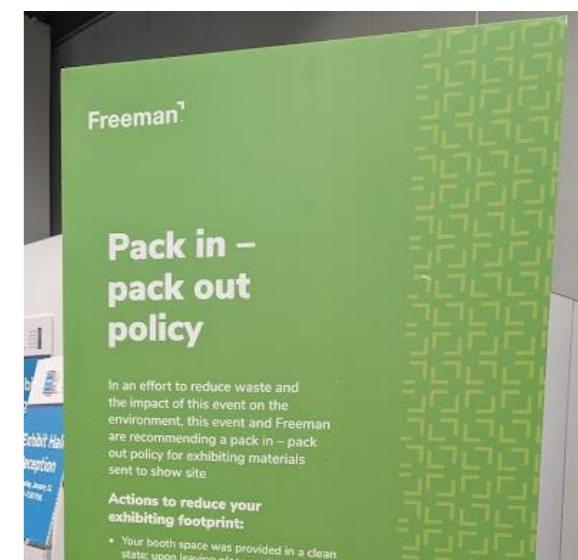
- Offsetting AMS staff travel to Denver
- Created a face mask and name badge/lanyard recycling program in partnership with Terracycle, collecting 7.87 kg of material

ATTENDING THE MEETING

- Educated attendees with Green Meetings Initiatives specific to Denver and their local efforts on sustainable action
- Encouraged attendees to offset their travel to the Annual Meeting within registration process
- Virtual options for presenting and attending the Annual Meeting significantly reduced the event's emissions footprint

EXHIBITING

- Strong partnership with Freeman to encourage minimized waste via a pack in-pack out model throughout the Exhibit Hall



DID YOU KNOW?

Offsetting the AMS staff's flight travel to Denver mitigated an estimated 58,822 kg CO₂e

That's the equivalent of driving a car around the earth nearly 6 times!



VIRTUAL ATTENDANCE

	North/ Central America	South America	Europe	Africa & Middle East	Asia Pacific	Oceania
Location (%)	77.3%	3.24%	9.08%	0.11%	9.41%	0.86%
Majority Countries	USA, Canada	Brazil, Peru	France, Germany, UK	Libya	China, Japan, India, Taiwan	Australia, Fiji, New Zealand

If all 1,010 virtual attendees, tuning in from 42 different countries, had chosen to travel in-person to Denver, the additional carbon emissions would have been an estimated 683,375 kg CO₂e

That's the equivalent of the emissions from 9 tanker trucks worth of gasoline!

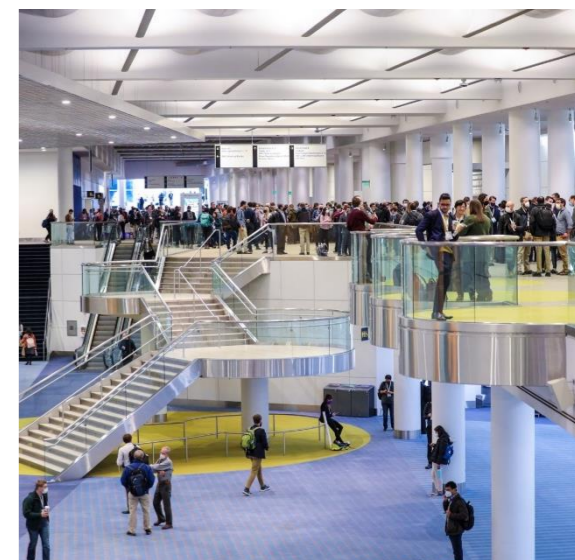
SUSTAINABILITY ACHIEVEMENTS COLORADO CONVENTION CENTER

FOOD SERVICE & MINIMIZED WASTE

- 47% of the meals served were vegetarian or vegan
- 600 boxed lunches donated to We Don't Waste

CONFERENCE SITE & VENUE OPERATIONS

- Currently 99% LED lighting and transitioning to 100%
- Training for staff on sustainability efforts – New hire, 30 days, 60 days, 90 days, refresher trainings
- RTD light rail D & H line go right through the Convention Center, allowing attendees easy access to public transit throughout the city



SUSTAINABILITY ACHIEVEMENTS

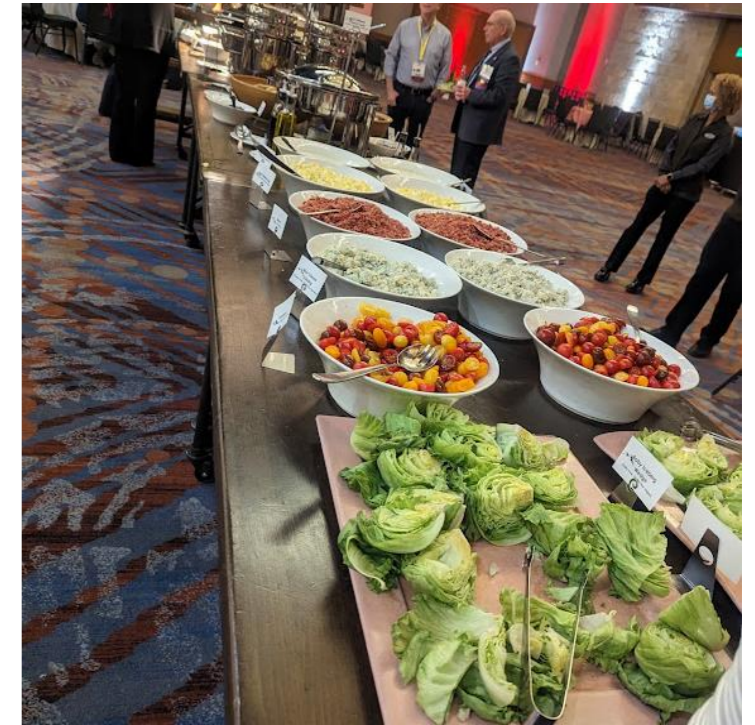
EMBASSY SUITES & HYATT REGENCY

EMBASSY SUITES DOWNTOWN

- First certified LEED Silver hotel in Denver
- 21,428 tons of concrete were reused from the demolition of the parking garage previously occupying the hotel site
- Recycling and composting both FOH & BOH, diverting 62% of all waste annually

HYATT REGENCY DENVER

- Employees supplied with reusable drink containers for cold & hot beverages while onsite
- Chefs incorporated local and organic ingredients into meal spreads
- LED lighting in all guest rooms and meeting spaces





As proud as we are of our sustainability efforts, the following are areas for continuous improvement in future event cycles:

EVENT WASTE

- While kitchen waste was collected and compost bins were placed throughout the Convention Center for attendees, several plastic and aluminum beverage containers made their way into the rollout that was sent to the composter (FOH/BOH compost combined in a single container)
- As a result, the contaminated compost ended up in landfill due to the organics sort not meeting the contamination threshold by the composter
- The contaminated compost would have been roughly 1,960 kg (CCC close to completing a new collection process to mitigate the contamination concerns)

FUTURE RECOMMENDATIONS

- Ensure signage is specific to service ware and materials available during that year's Annual Meeting
- Educate attendees and staff how to attend the Annual Meeting sustainably while onsite



As proud as we are of our sustainability efforts, the following are areas for continuous improvement in future event cycles:

EVENT WASTE (CONT.)

- Programs printed upon request for a fee rather than using pre-event estimates

FOOD & BEVERAGE

- Eliminate or minimize beef at all meal services - 21% of the meals contained beef
- Service ware consistency across venues - Reusables at Hyatt Regency vs single use compostables and boxed lunches at CCC (bulk cream, honey, sugar...)
- Eliminate single use water bottles from all event sites

SIGNAGE SHIFT

- Prioritize signage to be all digital or recyclable material

DID YOU KNOW?

If a 6,000-person event served one vegetarian meal instead of beef, the emission savings would have been upwards of 133,680 kg CO₂e

That's the emissions amount of energy required to power 16 homes over the entire year!

The budget is 1 Metric Ton of Carbon
How many people can we feed?



Beef
87 Meals



Chicken
787 Meals



Vegetarian
1,110 Meals



Vegan
4,000 Meals

Venue Footprint Data

ENERGY DATA

Venue Name	Energy Used (kWh)
Colorado Convention Center	579,375
Embassy Suites Downtown	3,931,808
Hyatt Regency Denver	1,145,070

WATER DATA

Water Used (gallons)	Water Used per Attendee
28,791	4.9

WASTE DATA

Waste Type	Amount (kgs)	Percentage (%)
Landfill	7,330	64.3%
Recycling	3,738	32.8%
Compost	0*	0%
Donation	327	2.9%

**1,960 kgs of compost if the compost had not been contaminated*

EVENT SCORING



The **MeetGreen® Calculator 2.0** is a comprehensive tool available for benchmarking the sustainable elements of events. Using the Calculator allows the AMS 103rd Annual Meeting to capture valuable information throughout the event planning process in order to make it easy to see where successes lay and where improvements can be made. For 2023, the 103rd Annual Meeting achieved the level of Leader at 57.48%! A Leader measures, tracks and reports on performance targets using key data. They share best practices freely with others to continuously raise the bar as well as addresses global issues with solutions that are event-specific.

MeetGreen Calculator Event Sustainability Level	Score Percentage (%)
Change Agent	0-29%
Champion	30-49%
Leader	50-69%
Visionary	70-100%



ASSUMPTIONS

Event Scope

- Carbon impact was assessed based on AMS's event footprint within the Colorado Convention Center, Hyatt Regency Denver, and Embassy Suites By Hilton Denver Downtown Convention Center

Transportation

- Commercial flight emissions were calculated based on economy-class with radiative forcing

Food & Service Ware

- Food items were calculated using an average meal type and weight
- All emissions factors include average starters/sides emissions
- Vegan starters/sides use average serving sizes of vegetables, fruit, and grain
- All non-vegan starts/sides assumed to be served with non-vegan ingredients
- All protein emissions are based on a 4 oz. serving size

Hotel Energy

- Hotel energy was based on a mean average of Denver hotels' average kWh usage, which takes room size and local renewable energy sourcing into account

Sources

[Cornel Hotel Sustainability Benchmarking, 2021](#)
[DEFRA Greenhouse Gas Conversion Factors, 2022](#)
[EPA, Carbon Equivalency](#)
[Poore and Nemecek, 2018](#)



Congratulations

**on a successful event using
the Earth's resources wisely!**

PREPARED BY MEETGREEN