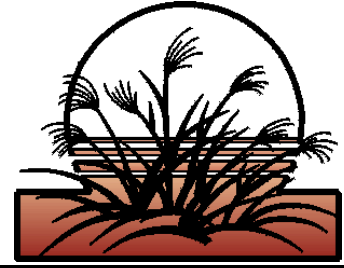




**NEWSLETTER  
TWIN CITIES CHAPTER  
AMERICAN METEOROLOGICAL  
SOCIETY  
September 2008 Vol. 30, No. 1**



**The meeting of the Twin Cities Chapter of the AMS will be at 7 PM September 18th, 2008, Twin Cities NWS, Chanhassen, MN. Specific directions to the meeting can be found on page 4. AMS chapter members, interested acquaintances and potential members are invited to attend.**

***September Meeting: 2008 Midwest Flooding, Andrea Holz, Hydrologist at the North Central River Forecast Center AND Our Chapter's 60<sup>th</sup> Birthday Party***



Cedar Rapids, IA, during the Flood of 2008.  
[http://www.nydailynews.com/img/2008/06/14/alg\\_cedar\\_rapids.jpg](http://www.nydailynews.com/img/2008/06/14/alg_cedar_rapids.jpg)

The September meeting topic will be on the 2008 summer flooding in the Midwest. Our presenter will be Andrea Holz, a hydrologist at the North Central River Forecast Center in Chanhassen. The meeting will begin at 7 p.m. and will be held at the National Weather Service office in Chanhassen in the WFO/RFC conference room.

In addition to the speaker, we will be celebrating our 60 years as a chapter. Refreshments will be provided in the form of a birthday cake!

Please join us in celebrating our 60<sup>th</sup> birthday, and in learning about the catastrophic flooding that affected the Upper Mississippi Valley region this summer.

***President's Corner - Chris Bovitz***

Hey, we're 60! Happy birthday Twin Cities AMS! I feel honored to be the leader of the group at this time.

As I mentioned in the summer newsletter (and I won't repeat all of that here ... you're welcome), I've got a lot of things I'd like to do this year. I think we're up to it. Our membership continues to grow, and I think we're ready to branch out. As I mentioned at the May meeting, my goal for the group is to become a clearinghouse, a central location where meteorologists and weather enthusiasts can exchange information about the different aspects of the world of meteorology.



I will, though, repeat, those two things we can do now: Bring a Friend, and Tell Two Friends. The best advertising we have is word-of-mouth. My mouth is only so big. We have more than 50 people who can extol the virtues of our group. Let's get the word out there. It doesn't hardly take any effort to post a copy of the newsletter on your lunchroom bulletin board or forward an e-mail to some of your co-workers. For you business-types, the cost-to-benefit ratio is quite low, and the return on investment is high. (You can bring more than one friend and tell more than two friends, by the way.)

And please, don't forget about the meetings, which are going to be generally on the third Thursdays. The monthly meetings are our connections with the other members. If you know of ways to make them more interesting - speakers, locations, props, food - please let me know.

## *Out and About in the Community: The Great Minnesota Get Together*



The NWS booth at the Minnesota State Fair. Several AMS members staffed the booth during the 12 days of the fair.

The end of August usually means several things to Minnesota residents – prepping for the new school year, the pennant race for the Twins, the beginning of the new Vikings season, an increase in area severe weather (at least for the last few years!), and of course, The Great Minnesota Get Together, also known as the Minnesota State Fair. From August 21<sup>st</sup> through September 1<sup>st</sup>, Minnesotans were treated to numerous opportunities to feast upon Pronto Pups, Cheese Curds, and Hot Dish on a Stick, to watch live outdoor TV broadcasts from the local stations, to stare in amazement at half ton pumpkins, and of utmost interest to this group, to chat with local meteorologists and hydrologists from the National Weather Service. AMS members Lisa Schmit, Karen Trammell, Matt Friedlein, Mike Bardou, and Rich Naistat, all spent some time at the NWS booth, located in the Education Building,

answering questions and talking about the weather with thousands of interested visitors. The most popular discussion topics were NOAA All-Hazards Radio, surfing NWS webpages, and the suddenly active hurricane season. Of course, a few of us did not miss a chance to discuss the local AMS chapter with especially interested parties. I think all the participants would agree that participating in the fair was a worthwhile experience, providing an avenue to educate people about meteorology, hydrology, and of course, the local chapter!

Send your event accounts to [newsletter@twincitiesams.org](mailto:newsletter@twincitiesams.org) so we can include it in a future newsletter!

## *Movin' On, Movin' Up, Movin' Out*

Lisa Schmit was promoted in August to Senior Forecaster at the NWS in Chanhassen. Congratulations, Lisa!

If you have big changes in your personal or professional life you would like to announce to the chapter, please send a summary to [newsletter@twincitiesams.org](mailto:newsletter@twincitiesams.org).



## *Editor's Notes - Karen Trammell*



Greetings fellow members! I am very happy to be serving the chapter as the new Newsletter Editor for this 2008-2009 chapter year. If you have any suggested changes or additions to the monthly newsletters, I am all ears! Of course, if you want to contribute a column for the newsletter, I am open to volunteers! I want to say a HUGE thanks to my predecessor, Kurt Scholz, for leaving the newsletter “program” in such good shape; Kurt, you have made it very easy for me to pick up where you left off!

## *A Look at Weather History: Hurricane Chantal, 1989*

Anthony Stender

The 1989 hurricane season is best remembered for Tropical Storm Allison and Hurricane Hugo. Tropical Storm Allison formed in late June over the Gulf of Mexico from the remnants of the Pacific Hurricane Cosme. Within a few days, it struck Texas, resulting in 11 deaths and \$500 million in damages. Hurricane Hugo developed from a depression that originated off the coast of Africa. Hugo struck the mainland United States near Charleston, S.C., late into the evening of September 21<sup>st</sup>. Once Hugo was finished, at least 49 people were dead (21 in the U.S. alone), and damages were estimated at over \$7 billion. At the time, Hugo was the costliest hurricane in U.S. history.

Chantal was the first official hurricane of the 1989 season. Originally, Chantal was an inter-tropical convergence zone disturbance off the coast of South America that was slow to organize. On July 31<sup>st</sup>, Chantal was classified as a Category 1 hurricane, before striking the Texas coast on the morning of September 1<sup>st</sup>. The storm's center dissipated over Oklahoma on September 3<sup>rd</sup>. As a hurricane, Chantal caused 13 deaths and \$100 million in damage. However, the storm once known as Chantal was not completely finished.

In the hours that followed, the central remnants of Chantal tracked northward into Kansas before slowly turning eastward across Nebraska, Iowa, Wisconsin, and Michigan. The heaviest rains in the Midwest fell to the south of the low's center, hitting Chicago especially hard. However, on August 4<sup>th</sup>, much of southeastern Minnesota was struck by 60 mph winds and 2.5 inch hail, in addition to rain from the system. While many hurricanes manage to indirectly affect the weather in the Upper Midwest, it is quite rare for the remnants of a hurricane to move so far north. That makes Chantal a noteworthy hurricane of 1989.

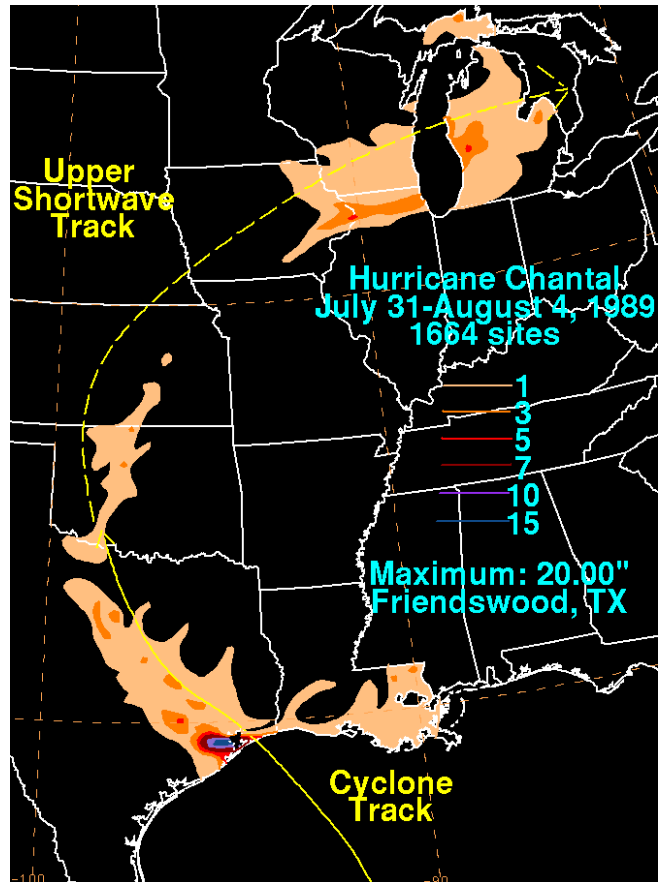
Sources:

Case, B. and M. Mayfield, Annual Summaries: Atlantic Hurricane Season of 1989. MWR (1990): 1165-1177.

Hurricane Chantal: July 31-August 4, 1989. Found at:

<http://www.hpc.ncep.noaa.gov/tropical/rain/chantal1989.html>

NCDC Storm Reports for Minnesota. Found at: <http://www4.ncdc.noaa.gov/cgi-win/wwcgi.dll?wwevent~storms>



<http://www.hpc.ncep.noaa.gov/tropical/rain/chantal1989filledrainblk.gif>

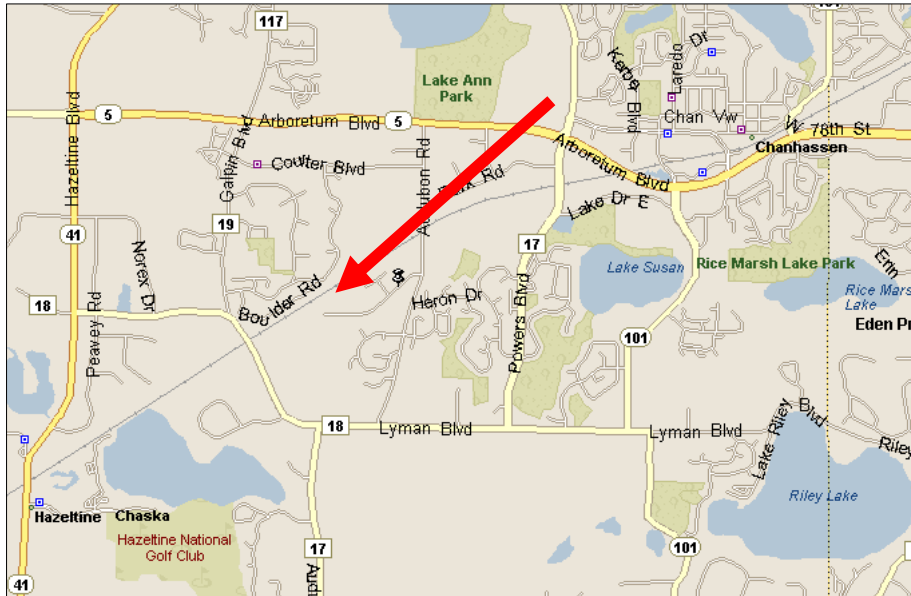


### *AMS on the WWW*

Please check <http://www.twincitiesams.org> for lots of interesting information, changes and updates.

*The September meeting will be held at 7pm, on September 18th, 2008, NWS, 1733 Lake Drive West, Chanhassen, MN.*

## Directions



follow it to Audubon Road, then turn **left** and head south to Lake Drive.

Take Highway **494** to the exit for Minnesota **Highway 5** west in Eden Prairie. Travel west on highway 5 into Chanhassen. Turn **left** (south) at **Audubon Road**. Follow Audubon Road to **Lake Drive**, then turn **right** and follow Lake Drive to the NWS entrance, which will be on your left. The Nexrad radar tower will be visible as you approach the area. An alternative, if traffic is heavy and you want to avoid the Audubon turn off of highway 5, is to turn **left** at the light onto **Powers Boulevard**, and head south. You would then take the **first right** off of Powers Boulevard, onto **Park Road**, and

Twin Cities Chapter AMS  
c/o Karen Trammell  
8675 Marigold Circle, Apartment 314  
Eden Prairie MN 55344

