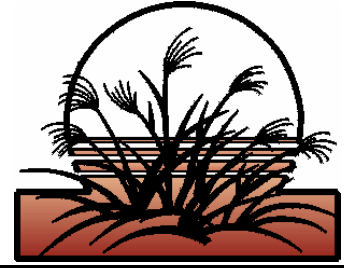




NEWSLETTER  
TWIN CITIES CHAPTER  
AMERICAN METEOROLOGICAL  
SOCIETY  
May, 2008 Vol. 29 No. 9



The meeting of the Twin Cities Chapter of the AMS will be at 7 PM May 20th, 2008, Twin Cities WFO, Chanhassen, MN Specific directions to the meeting can be found on page 5. AMS chapter members, interested acquaintances and potential members are invited to attend.

*Annual Picnic in the Backyard of the WFO in Chanhassen!! 6 p.m. Meeting at 7p.m. Tuesday May 20<sup>th</sup>.*

The May meeting and picnic will be held on Tuesday, May 20, at the MPX WFO in Chanhassen. We will again have party subs with chips and soft drinks. The food will be available around **6pm**. If it rains, or the weather is otherwise inclement, we will hold the festivities in the WFO's conference room. In either case, we'll have a (hopefully) short meeting starting around 7pm. We don't have a speaker, but I'd like to hear about how well we did this year and what we can improve for next year.

If you will be attending, tell me ([president@twincitiesams.org](mailto:president@twincitiesams.org)) **before Sunday, May 18**, how many (including you) that you

will be bringing to the picnic. Also, to help defray some of the cost of the food, please bring \$5 per person.

*President's Corner: Chris Bovitz*

Well, we made it through another year. Before we go, I have some parting comments.

Some of you know that with Kurt Scholz's new position as head of the Mathematics Department at St. Thomas University comes his need to turn over the chapter newsletter duties. I would like to thank Kurt and his wife Rainie for their work on making the newsletter look great and gotten out each month. So, thank you, Kurt. I hope you will still be able to attend a meeting or two.

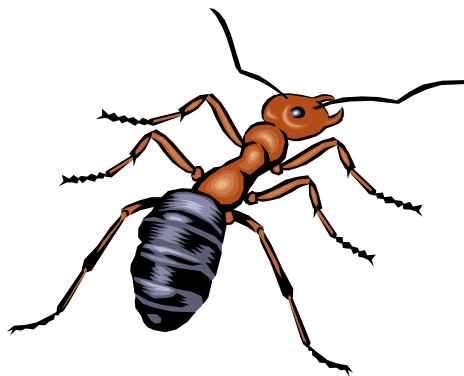
As for the rest of you who've helped out or contributed this year - Lisa, Lori, Karen, Kevin, Matt, Anthony, Kenny, and anyone else I've forgotten (I apologize if I have) - thank you, too. I wish there were more people's names on that list. Think about that for next year. This chapter runs on the efforts of not only its officers, but the rest of its members.

One thing I've tried to do for the last couple of years is try to reach out to other parts of the Twin Cities' meteorological community. I see a bunch of "islands" of meteorologists around this good-sized metro area (and surrounding parts of Minnesota and Wisconsin). Some of these islands have dozens of people on them, and some have one or two people. I want to build bridges. We all have something to offer each other. And



by joining together, we can become much stronger than all of us separately. And, hey, if we learn a bit more about our profession or our hobby, I see that as a good thing, and I hope you do, too.

I hope you had a good time in the chapter this year, and I hope you consider rejoining next year. Whoever is in charge next year, let's make our 61st year of existence the best year in the chapter's history. But we're going to need some help. If you want to help out, let one of the officers know. We'll find something.



### ***New Weather Contest!***

As mentioned in last month's newsletter, we're going to have a weather contest over the summer. In it, you will predict, between (and including) June 20 and September 22:

1. Maximum temperature (°F)
2. Number of thunderstorm days (days)
3. Tiebreaker – Maximum dewpoint temperature (°F)

Data will be collected from the observations at KMSP.

Get your guesses to the secretary-treasurer ([sectreas@twincitiesams.org](mailto:sectreas@twincitiesams.org)) by June 1. The prizes, awarded at the October meeting in the fall, will be \$20 gift cards from a store of my choosing, but it'll be a place you'll likely visit. We'll keep track on the web site as we have been for the winter weather contest. To make this competitive and fun, we need at least 10 members doing this.

### ***Elections***

At the May meeting, we will elect the officers for next year. The positions are president, vice president, secretary/treasurer, and newsletter editor. There are no residency or membership requirements except that you must be a member of the chapter to be an officer, and to be president, you must be a member of the national AMS before the start of the next Chapter year (in September).

According to our Constitution, only members who attend the meeting at which the elections take place will be able to vote for the officers. So if you want a say in who runs this chapter, ya gotta show up. (If you want to change our Constitution, that's a topic for another time, but these are the rules as they are now.)

If you are interested in running, please contact one of the officers. You may also talk with them to find out what they do to see if it's something you'd want to do. And even if it isn't, and you want to be more involved in the chapter, there always ways you can.

### **Here are some brief job descriptions:**

**President:** The leader of the chapter and the one who sets the tone and direction for the chapter. Interact with the national chapter on matters of administrative importance and with other local chapters. Set up local chapter committees as needs arise. Must be a national member of the AMS.

**Vice President:** Back up to the president if he or she is not available for a function or duty. Oversee the committees, both standing and temporary.



**Secretary-Treasurer:** Administrative focal point for the chapter. Take meeting minutes and send them in a timely manner to AMS national headquarters. Handle all financial transactions of the chapter. Keep an updated member list and collect dues.

**Newsletter editor:** Collects items for the monthly newsletter and distribute it timely manner to not only members, but also others in the field such as the media or news organizations.

An important committee is the Speakers and Activities Committee. This group looks for speakers for the meetings, handles speaker requests from outside entities, and plans activities. There are currently two members, but more members mean more ideas. You don't need to be elected to be on this committee.

## *Movin' On, Movin' Up, Movin' Out*



If you have big changes in your personal or professional life you would like to announce to the chapter, please send a summary to [newsletter@twincitiesams.org](mailto:newsletter@twincitiesams.org).

## *A Look at Weather History: May 1965*

Anthony Stender

“Elmer Mueller of Young America reported that he saw the steeple of St. John’s Lutheran Church sway.”

“Wilbur Poppitz picked up a croquet mallet with a toothpick-like splinter driven into it.”

“Don Bohlinger... saw the bottom of the lake when the funnel pulled the water up and out of the lake.”

“Sunday was a perfect spring day and sightseers by the hundreds were out surveying the storm damage.”

“Mrs. Myron Sellnow’s winter coat was found intact in the Milton Schrupp yard after the storm.”

“Major destruction... in an area a half to three-quarters of a mile wide more than eight miles long.”



On May 6, 1965, a Thursday evening, a string of tornadoes started out west of the Twin Cities metropolitan area and swept across parts of the western and northern suburbs. Newspaper accounts of the story reveal that this was a very different time, yet it was barely 40 years ago. In one case, a woman received a letter from someone who found her bank statements 25 miles away. In another story, a couple pulled off the road with their car and ran into the nearest walk-in basement to take cover, to the surprise of the family who lived there and were also taking shelter in the basement.

In the days that followed the storm, clean-up efforts were hampered due to continued poor weather. On Friday morning, around 6 a.m., hailstones measuring eight inches in circumference were reported in Hamburg. Heavy rains fell on Saturday, followed with high winds on Saturday night. More trees were uprooted trees and more buildings were damaged as a result. Farmers were especially hard hit by the storm.

At least one hundred cattle were reported dead in Carver County, many farm buildings were destroyed, and feed supplies were lost.

According to the National Weather Service, the storm included one-F2, one-F3, and 4-F4 tornadoes. As an afterthought, May 1 – June 7, 1965 proved to be a very wet period for the Twin Cities. During that 38-day period, measurable precipitation fell on 24 days. To add insult to injury, snow fell on May 27<sup>th</sup> and 28<sup>th</sup>.

Quotes from Thursday, May 13, 1965 edition of *The Norwood Times*.



STUDENT SPEAKERS BEAU GJERDINGEN, KIRSTIN GLEICHER, DIANA JESBERG PRESENTED WITH THE AMS UMBRELLA BY CHRIS BOVITZ.



### *Editor's notes - Kurt Scholz*

Thanks to Chris Bovitz for the nice comments about me and my wife in his article. I've enjoyed editing the newsletter for the past six years, but now it's time to let someone else take over. Please consider coming to the picnic meeting in Chanhasseen next week if you want to participate in the election of the officers for next year.



### *Minutes of the April 17, 2008 meeting:*

The April 2008 meeting was held on April 17, 2008, at the Department of Atmospheric Sciences at St. Cloud State University. There was not a business meeting so that we could get right to the students' presentations. Our host was Dr. Tony Hanson of the department. About 15 of the department's students attended, and there were about a half dozen Twin Cities AMS members there.

The first presentation was by Kirstin Gleicher, titled Saharan air layer vertical profiles as observed during NAMMA. NAMMA is an acronym for NASA African Monsoon Multidisciplinary Analyses. Gleicher did her study during a summer program at NASA. Her desire was to confirm the Saharan air layers' (SALs') thermodynamic and particulate characteristics. The SALs often create low-level inversions, cause dry intrusions (mainly due to subsidence), and enhance low-level wind shear, any one of which is not conducive to development of African easterly waves into tropical cyclones. She used in-situ measurements of thermodynamic variables, particulate matter, and wind velocity from aircraft, which penetrated the layers. Her results confirmed the results already observed and the theory behind them. Her work can be found on the NAMMA web site.

Diana Jesberg's presentation was on "The dynamic structure of Hurricane Rita and how it compares to tropical cyclone theory." In tropical cyclone research, the reasons behind rapid intensification of cyclones are still not well understood. She wanted to see whether conditional instability of the second kind (CISK) or wind-induced surface heat exchange (WISHE), or both, or neither, was responsible for the rapid deepening of the cyclone. While a steady-state storm is desired, Rita underwent rapid deepening. Her methodology used dropsonde data from hurricane hunter aircraft, and plotted the equivalent potential temperature with respect to radial distance. She discovered that while the profiles more closely resembled WISHE, there was some influence due to CISK, at least in this storm.

Beau Gjerdingen's topic was "Mesoscale modeling of convective environments in Minnesota using the WRF-ARW." His goal, among others, was to compare the results of a high-resolution nonhydrostatic model to radar returns during three different events. The model had a large number of parameters for which he had to use approximations and assumptions. The inner model had 4 km resolution horizontally and a terrain-following vertical coordinate, denser near the ground. He showed a number of events, some in which the model did not produce any precipitation, many where the precipitation was not nearly as heavy as reality, and a couple where the precipitation was misplaced in time or space. His conclusion was that more study was needed, and that perhaps a few of the assumptions which were made were not the best ones to make.

## Upcoming AMS Chapter Meetings and Other Events

Date & Time	Event	Location
Tuesday, May 20 6:00pm	May meeting Picnic, recap of the year, elections, and planning for next year	<a href="#">Twin Cities WFO</a> Chanhassen, MN ( <a href="#">map</a> )

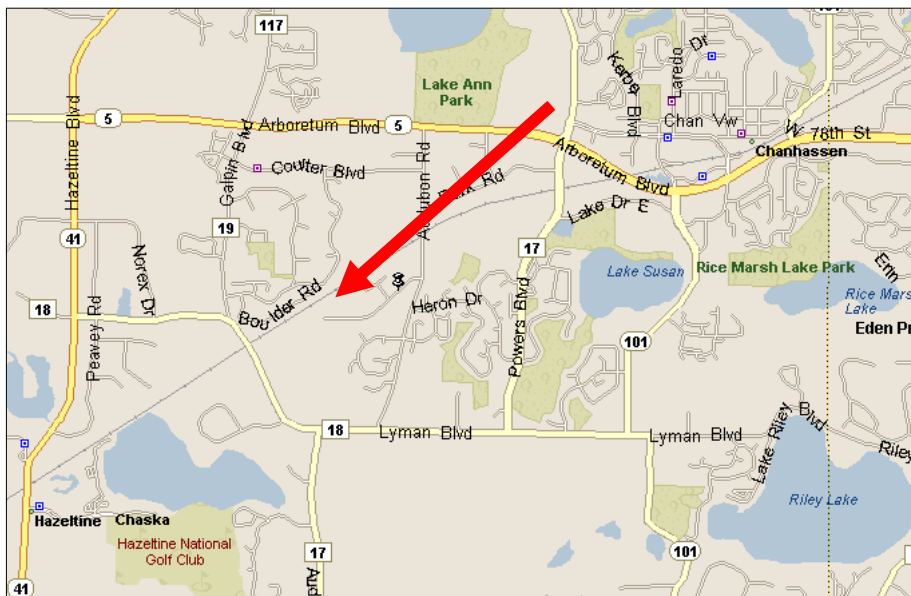


### AMS on the WWW

Please check <http://www.twincitiesams.org> for lots of interesting information, changes and updates.

*The May meeting will be held at 7pm, on May 20th, 2008, NWS, 1735 Lake Drive West, Chanhassen, MN.*

### Directions



follow it to Audubon Road, then turn **left** and head south to Lake Drive.

Take Highway **494** to the exit for Minnesota **Highway 5** west in Eden Prairie. Travel west on highway 5 into Chanhassen. Turn **left** (south) at **Audubon Road**. Follow Audubon Road to **Lake Drive**, then turn **right** and follow Lake Drive to the NWS entrance, which will be on your left. The Nexrad radar tower will be visible as you approach the area. An alternative, if traffic is heavy and you want to avoid the Audubon turn off of highway 5, is to turn **left** at the light onto **Powers Boulevard**, and head south. You would then take the **first right** off of Powers Boulevard, onto **Park Road**, and



Twin Cities Chapter AMS  
c/o Kurt Scholz  
3233 Snelling Ave. North  
Arden Hills MN 55112-3644

