

Forecast for 2008-09 Winter

George H. Taylor, CCM

October 24, 2008

In 2008:

1. I retired from OSU after 19 years
2. I founded Applied Climate Services of Corvallis
3. I got WAY happier!





ACS' T-shirt
and sweatshirt
design



Last Year's Prediction

- Temperatures slightly cooler than average in western Oregon and warmer than average east of the Cascades.
- Average to somewhat above-average precipitation.
- Good chance of low elevation snow in western Oregon.
- Above average snowpack in the mountains.

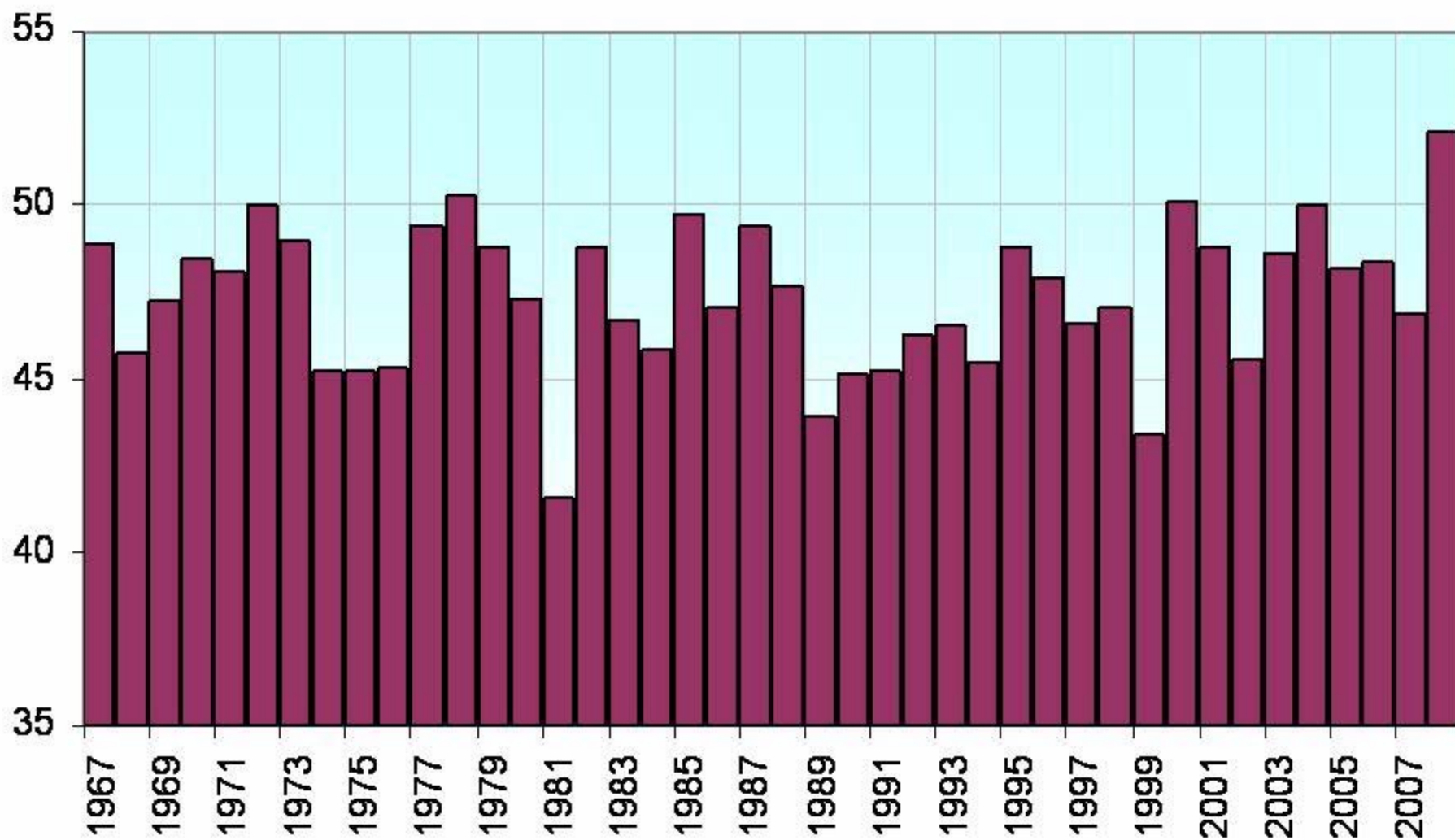
Photos from Jerry Kinney, Vernonia



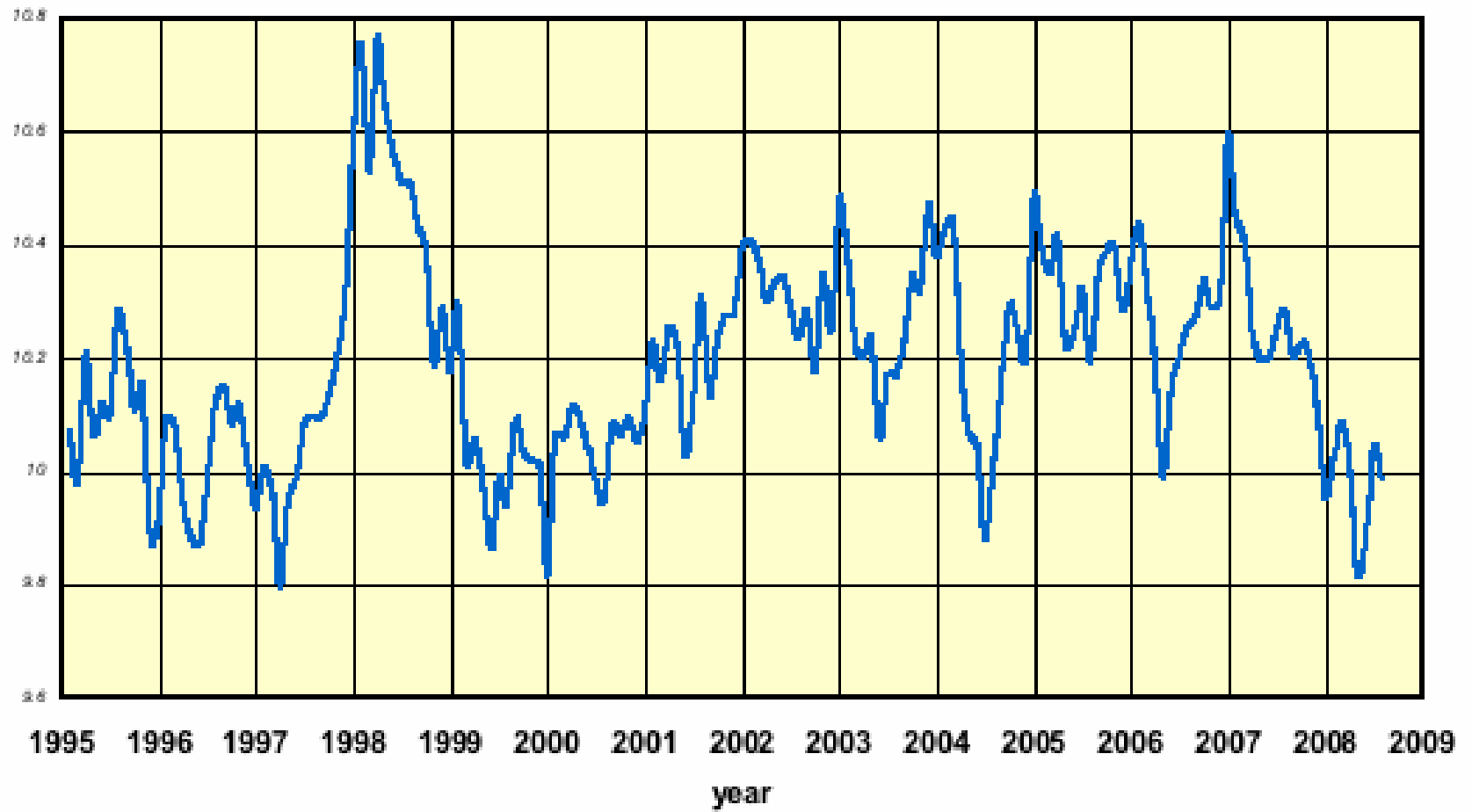
April 1, 2007 (above) April 19, 2008 (below)



Northern Hemisphere Snowcover Week 4 (January 28)



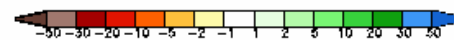
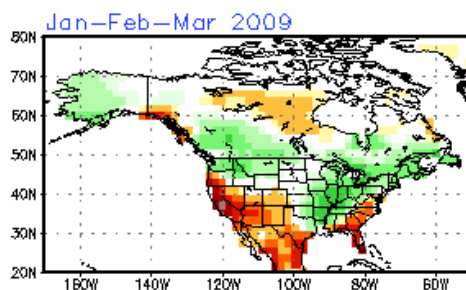
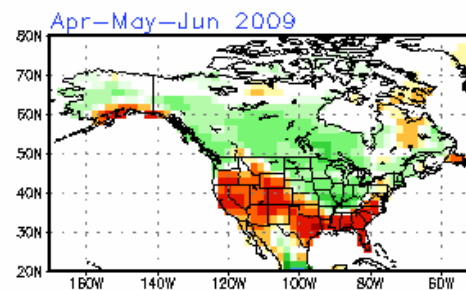
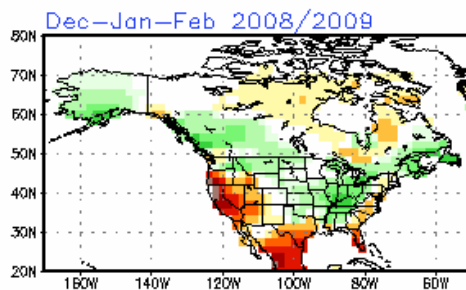
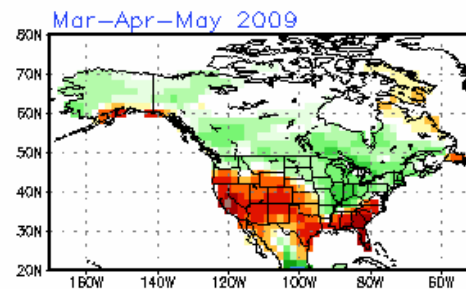
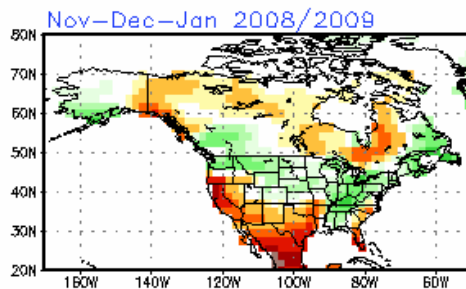
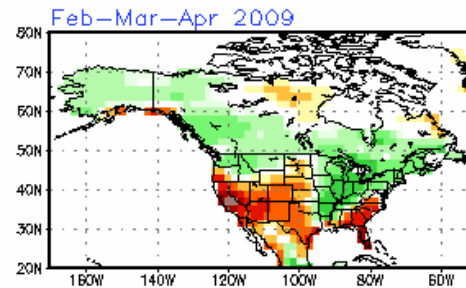
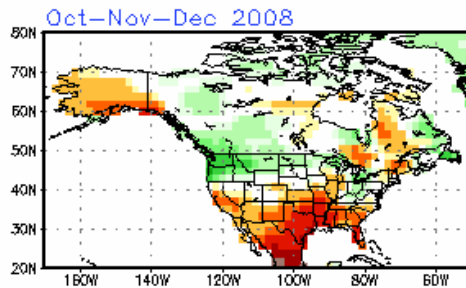
Temperature of lower troposphere, global, 1995-2008 (data from NASA)



NWS/NCEP

Seasonal Forecasts

CFS seasonal Prec forecast (mm/month)



Last update: Mon Oct 6 2008

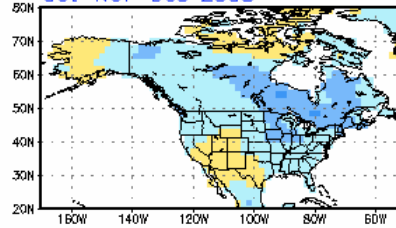
Initial conditions: 25Sep2008–04Oct2008



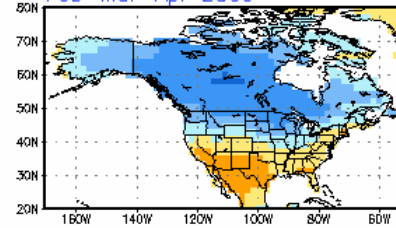
NWS/NCEP

CFS seasonal T2m forecast (K)

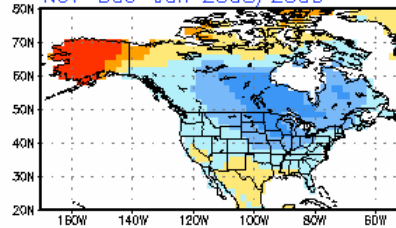
Oct–Nov–Dec 2008



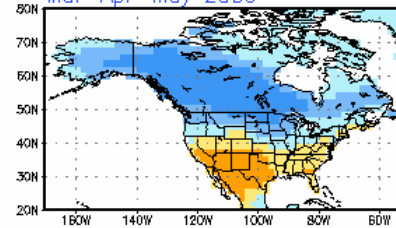
Feb–Mar–Apr 2009



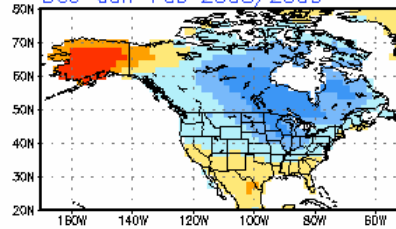
Nov–Dec–Jan 2008/2009



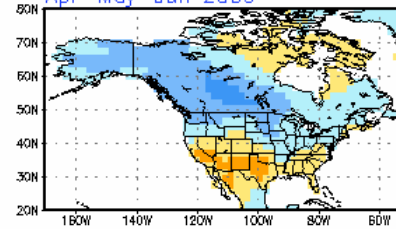
Mar–Apr–May 2009



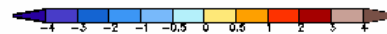
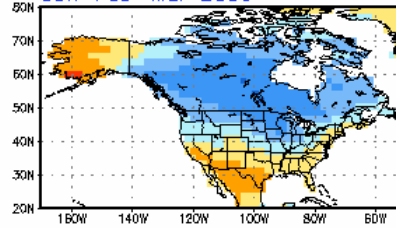
Dec–Jan–Feb 2008/2009



Apr–May–Jun 2009



Jan–Feb–Mar 2009



Last update: Mon Oct 6 2008

Initial conditions: 25Sep2008–04Oct2008



NOAA

Sea Surface Temperature
(SST) Forecasts

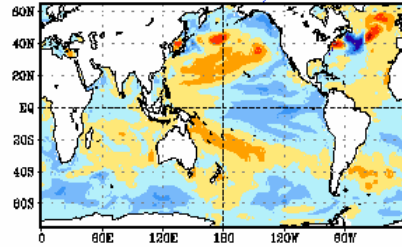


NWS/NCEP

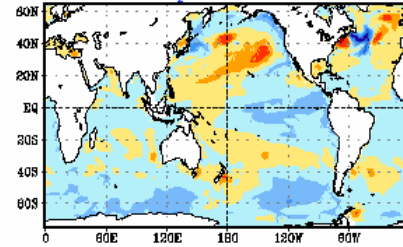
Last update: Mon Oct 6 2008
Initial conditions: 25Sep2008-04Oct2008

CFS seasonal SST forecast (K)

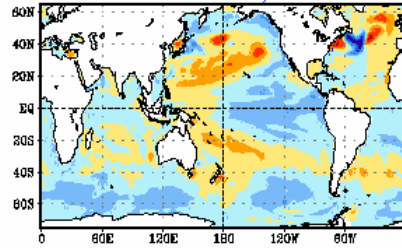
Nov-Dec-Jan 2008/2009



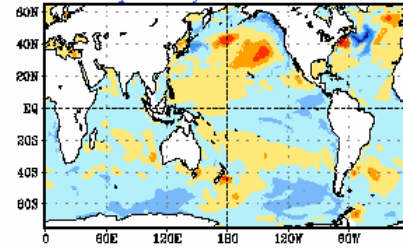
Feb-Mar-Apr 2009



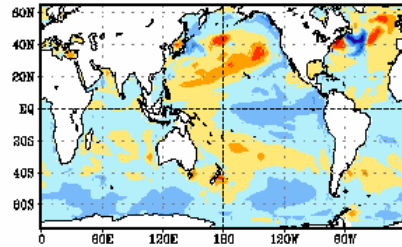
Dec-Jan-Feb 2008/2009



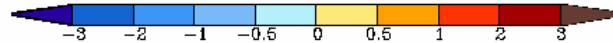
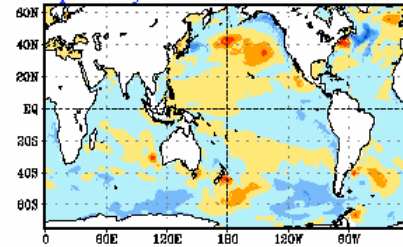
Mar-Apr-May 2009



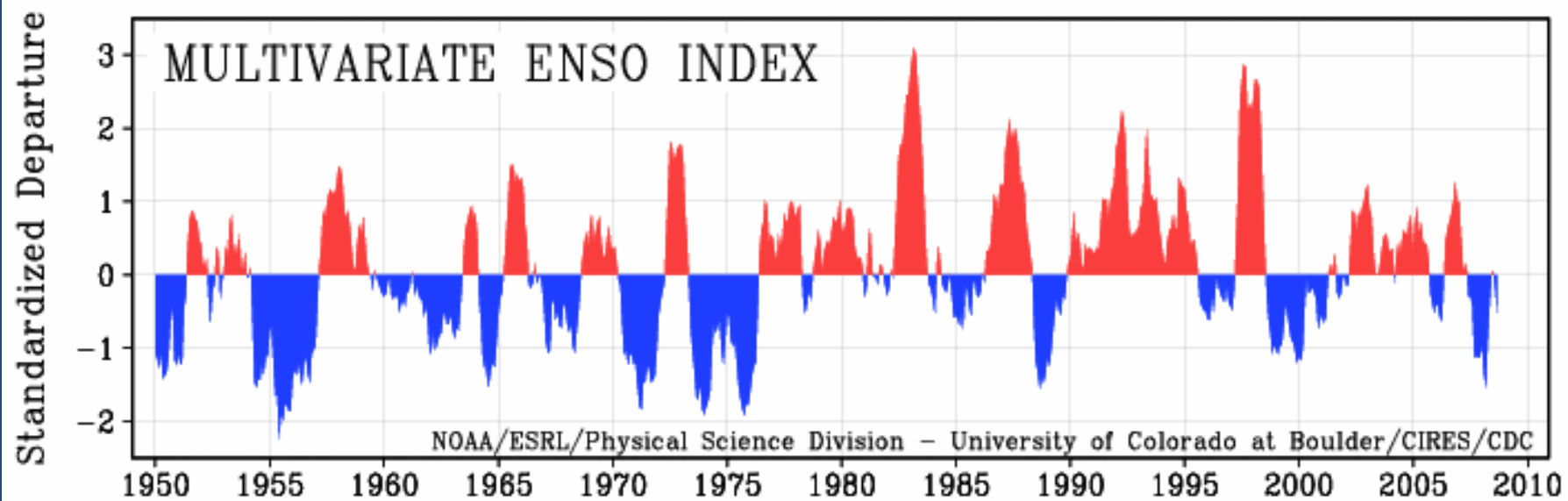
Jan-Feb-Mar 2009



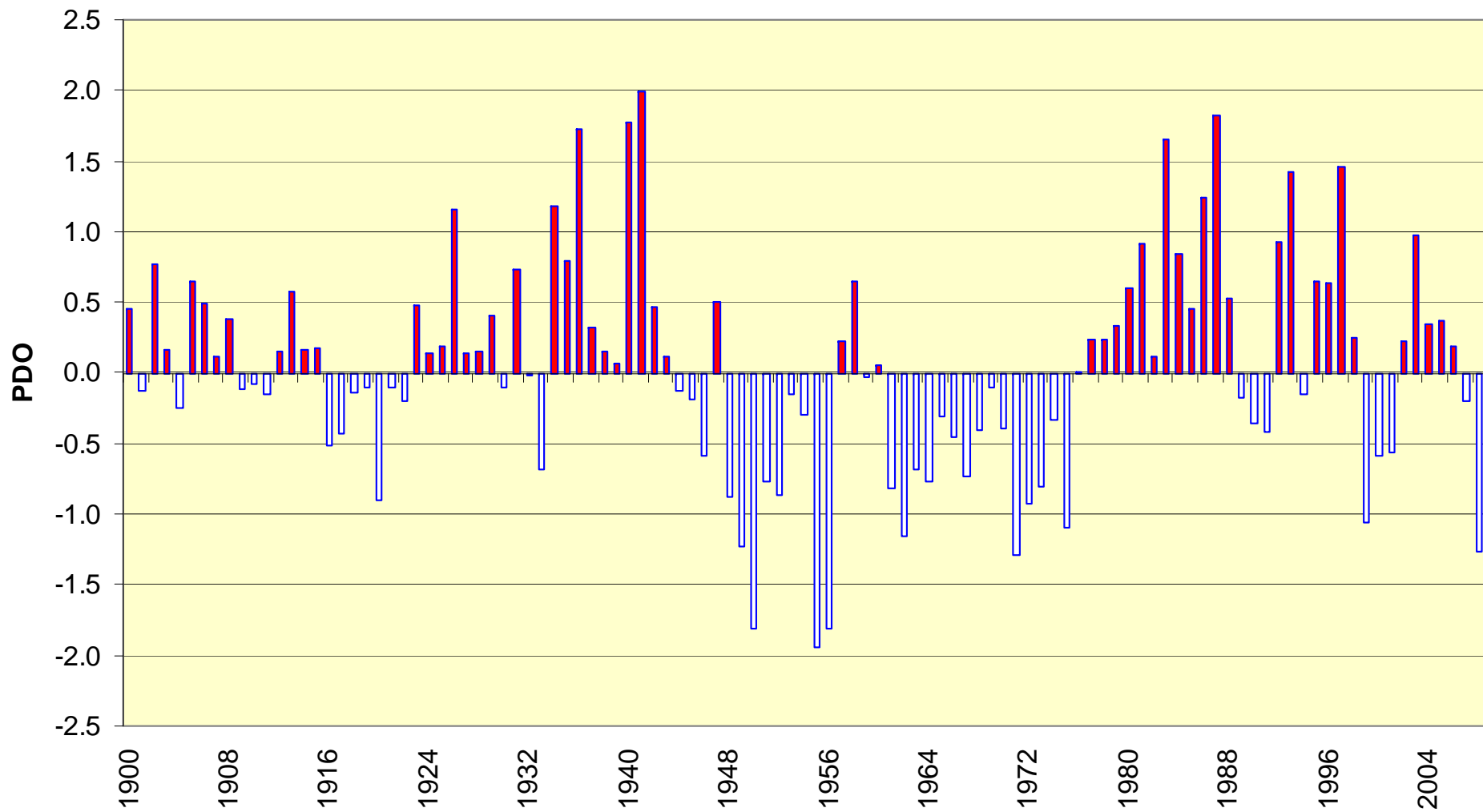
Apr-May-Jun 2009



Long-term Trends in Tropical Pacific Indicators

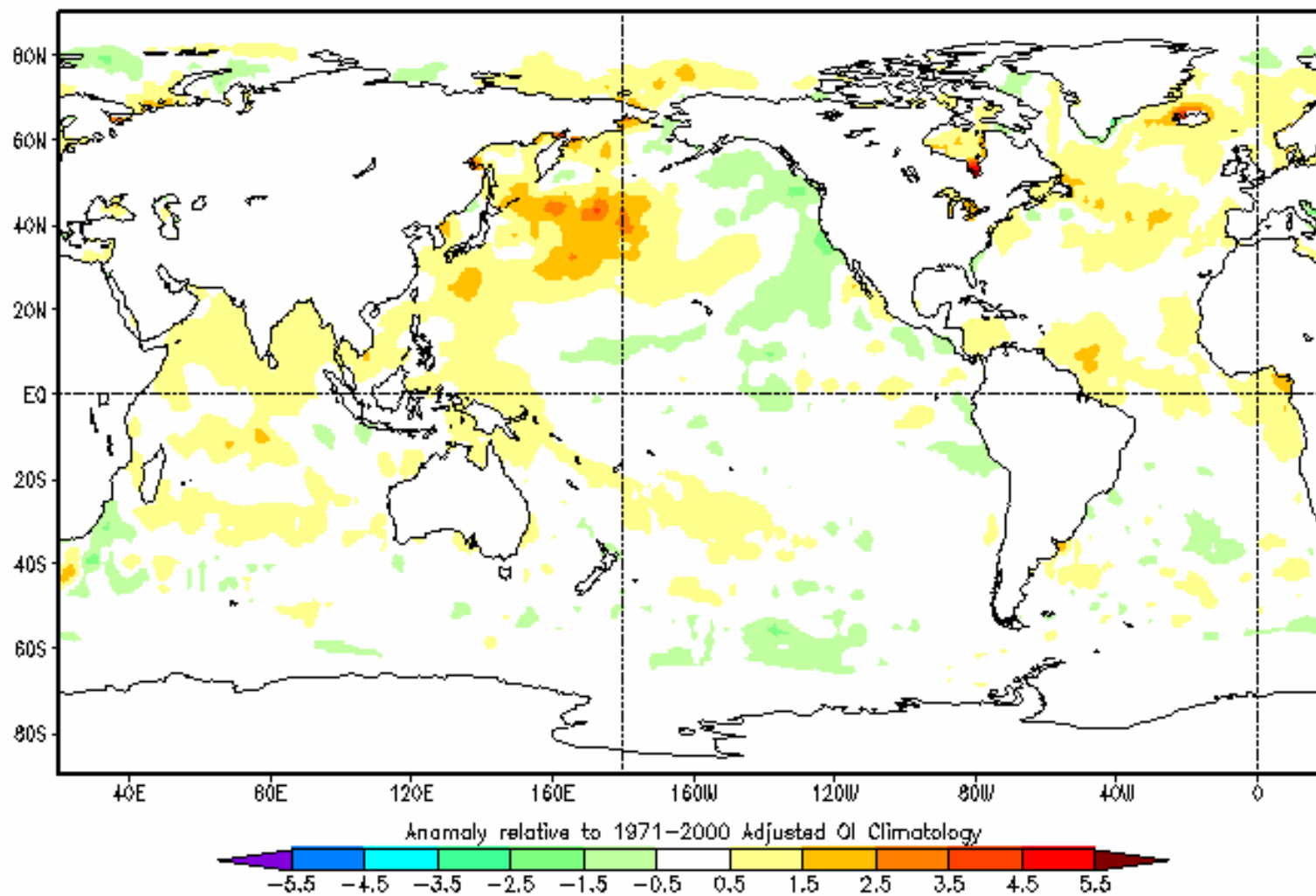


Annual Average PDO, 1900-2008



Current Conditions

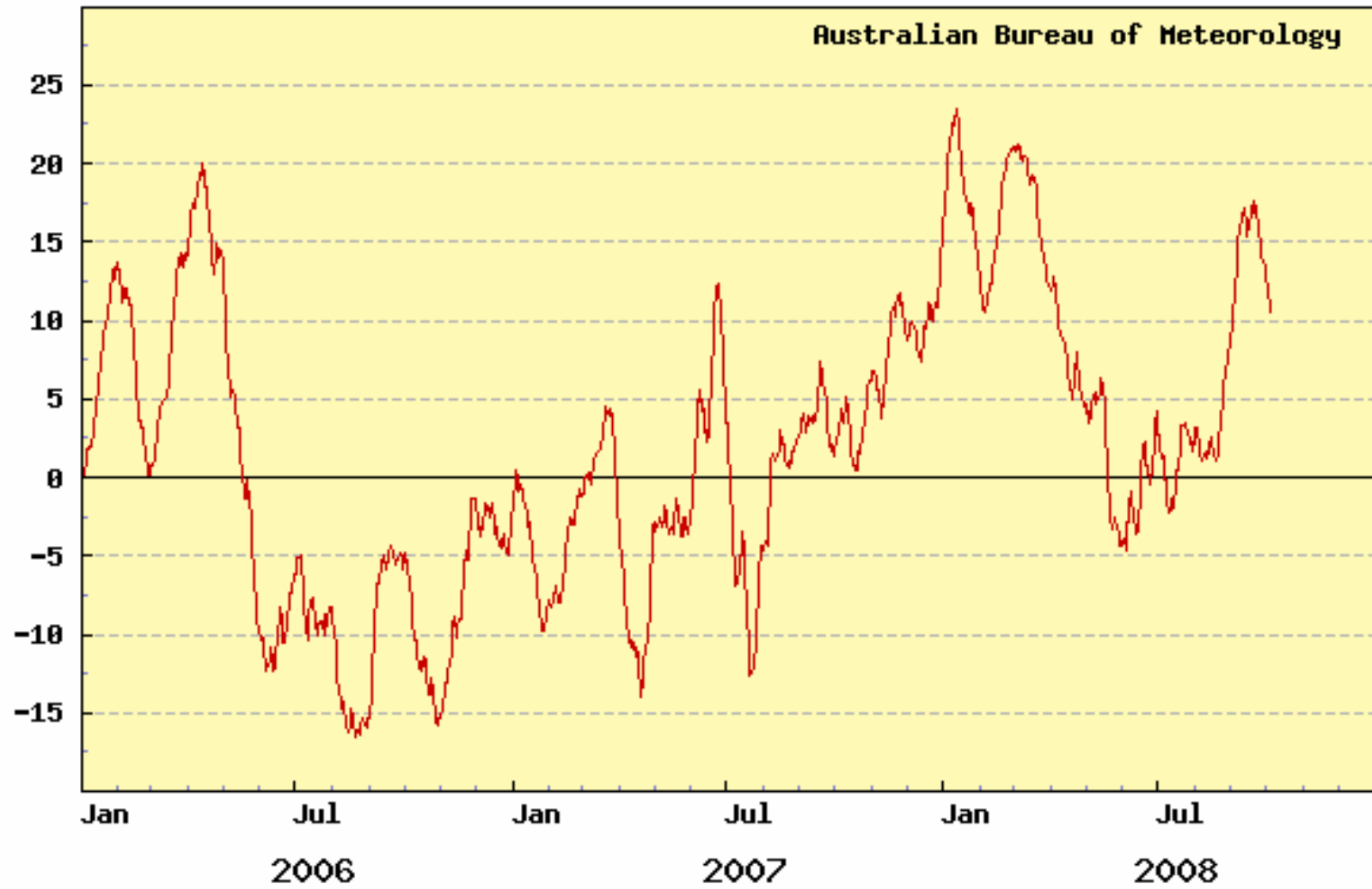
Olv2 Sea Surface Temperature Anomaly (°C) 12 OCT 2008 to 18 OCT 2008



GrADS: OQLA/KGES

Global Climate & Weather Modeling Branch/EMC/NCEP

30-day moving SOI
(shown against end date)



Our New State-of-the-Art Number Cruncher



Analogs

Best analog matches for 2008:
1955, 1971 and 1975.

1. Precipitation was relatively high
2. Snowfall was much higher than average
3. Early season mountain snow plentiful
4. Temperatures unremarkable, generally within the “average” range

Bottom Line

- Above-average precipitation
- Possibility of one or more PE/AR events
- Average temperatures

Skiers:

- Above-average mountain snowfall
- Slightly earlier-than-average opening